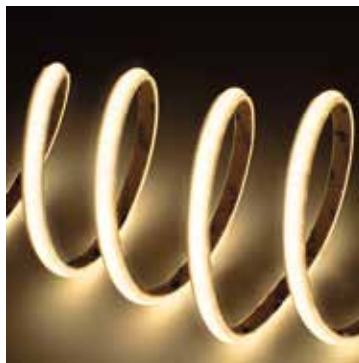


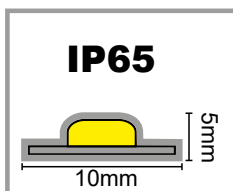
STRISCIA LED SCOB MILKY – IP65

IP 65

CRI 80



LED SCOB MILKY



TIPO DI ATTACCO:

Conduttori liberi – cavo 2x1mm² H05RNF

TIPOLOGIA:

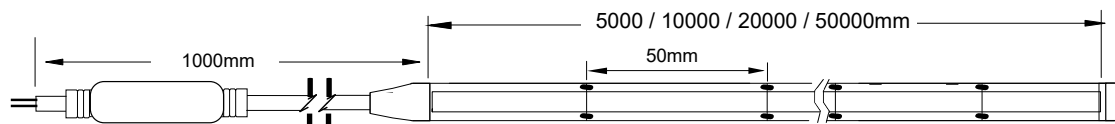
Striscia SCOB IP65

*NOTE:

Questo prodotto contiene una sorgente luminosa di classe di efficienza energetica F

ALIMENTAZIONE
220-240V~

FUSIBILE 4A



| Codice | LED/m | Potenza | Tensione di alimentazione | Flusso luminoso Φ360° | Flusso luminoso al metro | Kelvin | Fascio (BA) |
|---------------------|---------|-----------------|---------------------------|-----------------------|--------------------------|--------------|-------------|
| 16.LT232605C | 260 LED | 80W/5m | 220-240V~ 50Hz | 7250 lm | 1450lm/m | 3000K | BA 120° |
| 16.LT232605N | 260 LED | 80W/5m | 220-240V~ 50Hz | 7500 lm | 1500lm/m | 4000K | BA 120° |
| 16.LT232610C | 260 LED | 160W/10m | 220-240V~ 50Hz | 14500 lm | 1450lm/m | 3000K | BA 120° |
| 16.LT232610N | 260 LED | 160W/10m | 220-240V~ 50Hz | 15000 lm | 1500lm/m | 4000K | BA 120° |
| 16.LT232620C | 260 LED | 320W/20m | 220-240V~ 50Hz | 29000 lm | 1450lm/m | 3000K | BA 120° |
| 16.LT232620N | 260 LED | 320W/20m | 220-240V~ 50Hz | 30000 lm | 1500lm/m | 4000K | BA 120° |
| 16.LT232650C | 260 LED | 800W/50m | 220-240V~ 50Hz | 72500 lm | 1450lm/m | 3000K | BA 120° |
| 16.LT232650N | 260 LED | 800W/50m | 220-240V~ 50Hz | 75000 lm | 1500lm/m | 4000K | BA 120° |

16.LT232605C
16.LT232605N



16.LT232610C
16.LT232610N



16.LT232620C
16.LT232620N



16.LT232650C
16.LT232650N



ARTICOLI OPZIONALI



16.LT232CV0250

**ALIMENTATORE NO FLICKER
PER STRIP LED 230V- 250W**