

**PUNTO LUCE PER MENSOLE, INCASSO E PLAFONE - 3.3W**

Prodotto:

# PUNTO LUCE PER MENSOLE

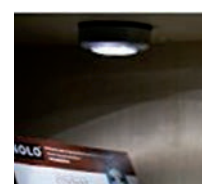
Incasso e Plafone - Alluminio

Luce Calda 3000K

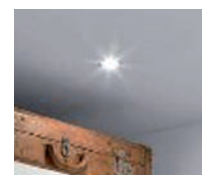
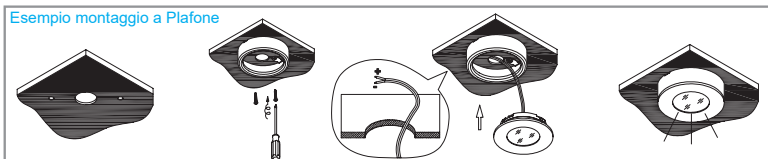
Luce Naturale 4000K



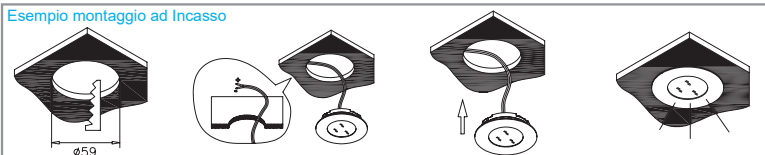
**IP20**



Esempio montaggio a Plafone



Esempio montaggio ad Incasso



CODICE	POTENZA WATT	VOLT	LUMEN lm	KELVIN	Angolo di diffusione	Colore	MISURE senza Anello cm ØDxH	MISURE con Anello cm ØDxH
<b>39.9PL1121C</b>	<b>3,3</b>	12	<b>220</b>	3000	100°	Bianco Opaco	7x1,45	7,1x2,4
<b>39.9PL1121N</b>	<b>3,3</b>	12	<b>240</b>	4000	100°	Bianco Opaco	7x1,45	7,1x2,4
<b>39.9PL1121SC</b>	<b>3,3</b>	12	<b>220</b>	3000	100°	Acciaio Satinato	7x1,45	7,1x2,4
<b>39.9PL1121SN</b>	<b>3,3</b>	12	<b>240</b>	4000	100°	Acciaio Satinato	7x1,45	7,1x2,4