

**LAMPADINE LED TUBOLARI T45 ST, FA330°**

Classe  
**A+**

**NUOVE  
LAMPADINE LED TUBOLARI  
T45**



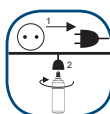
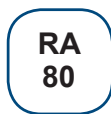
39.920520\*



39.920524\*



39.920525\*



Codice	Watt	Colore	Lumen	Tipo di attacco	Angolo Fascio	CRI	Dimensioni	Classe Etichetta Energetica
39.920520C	9.5W	3000K	<b>1055</b>	E27	FA 330°	80	136x44mm	A+
39.920520F		6500K	<b>1060</b>					
39.920520N		4000K	<b>1060</b>					
39.920524C	14W	3000K	<b>1400</b>	E14	FA 330°	80	154x45mm	A+
39.920524F		6500K	<b>1521</b>					
39.920524N		4000K	<b>1521</b>					
39.920525C	14W	3000K	<b>1400</b>	E27	FA 330°	80	152x45mm	A+
39.920525F		6500K	<b>1521</b>					
39.920525N		4000K	<b>1521</b>					