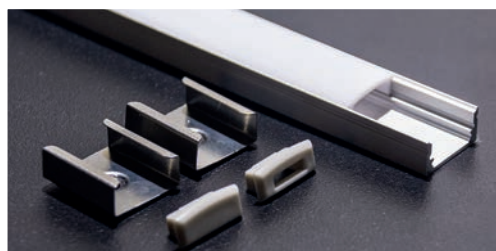


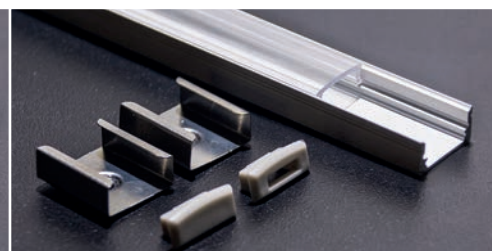
KIT PROFILO ALLUMINIO 2M DISSIP. 20W/M PARETE/ANGOLARE



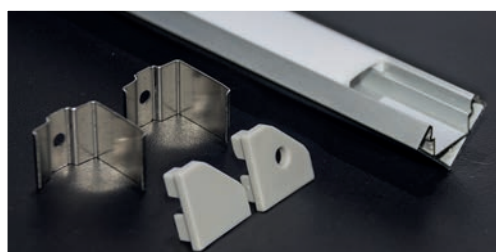
16.LTP5011KO



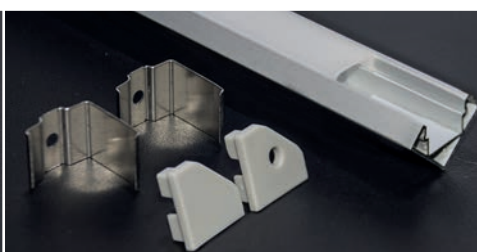
16.LTP5011KS



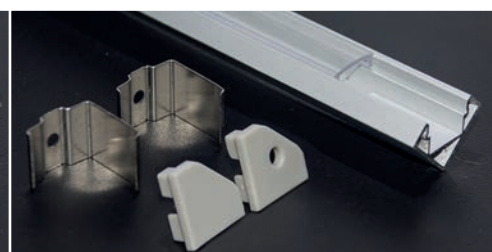
16.LTP5011KT



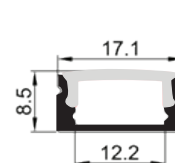
16.LTP5031KO



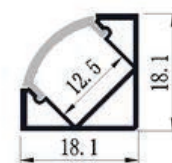
16.LTP5031KS



16.LTP5031KT



PARETE



ANGOLARE

2m

Codice	PROFILO	COVER	RESA LUMINOSA	TAPPI	STAFFE	DIMENSIONI	DISSIPAZIONE
16.LTP5011KO	Da parete	Opale	70%	4	4	17,1x8,5mm	20W/m
16.LTP5011KS	Da parete	Satinata	90%	4	4	17,1x8,5mm	20W/m
16.LTP5011KT	Da parete	Trasparente	100%	4	4	17,1x8,5mm	20W/m
16.LTP5031KO	Angolare 45°	Opale	70%	4	4	18,1x18,1mm	20W/m
16.LTP5031KS	Angolare 45°	Satinata	90%	4	4	18,1x18,1mm	20W/m
16.LTP5031KT	Angolare 45°	Trasparente	100%	4	4	18,1x18,1mm	20W/m

**TUTTO in un Unico
IMBALLO
CONFEZIONE DA 80PEZZI**

